



THEFT PREVENTION RELATED PARTS

ULTRA ROBOT ARM LOCK TDX-06



Has ability to protect two vehicles simultaneously. The 3-meter long type allows securely lock two motorcycles with ample space. Compatible with some four-wheeled vehicles **※2**, providing robust protection for a wide range of vehicles.

NOTE

- **LENGTH : 3,000mm** ● **WEIGHT : 12kg** ● **ARM SIZE : 19m sq.**
- BOLT CLIPPER / HYDRAULIC CUTTER BREAKAGE TEST CLEARED
- LOCK ARM : SPECIAL ALLOY STEEL ● KEY CYLINDER BLOCK : HARD STAINLESS ALLOY STEEL ● KEY CYLINDER : ABLOY SENTRY (1POINT) ● KEY PATTERN : 360,000,000
- ONE-TOUCH LOCK MECHANISM ● END SHAFT : φ22 (PROTECTIVE SPONGE : K-PAD 110 INCL.) ● END SHAFT WIDTH : 320mm ● KEY BLOCK SIZE : 50mm x 70mm x 25mm
- SERIAL CARD : 1 qty. (FOR MAKING SPARE KEY) ● KEY : 2 INCL. (SPARE KEY INCL.)
- PROTECTIVE COVER : REINFORCED NYLON (VELCRO FASTENING ON BOTH ENDS)
- K-TECH SECURITY LEVEL : **85** **※1**

※1, **K-TECT SECURITY LEVEL** : Quantified overall security level by KITACO standard.

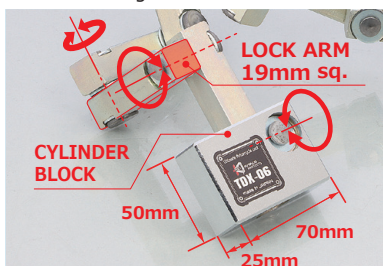
Use as guide for each locks comparison.

※2, In case of using as four wheeled vehicles lock, it may not be used due to wheel's spoke design, vehicle grade and structure (small diameter wheel) etc.

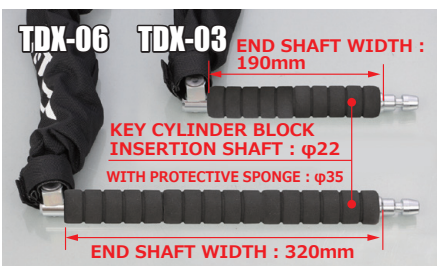
CODE	PRICE	JAN CODE
880-1001006	¥ 98,000	4 990852 112965 2

※ Products and prices are subject to change without notice.

TDX-06 LOCKS WHEELS !



● Special rivet allows smooth attachment and detachment with minimal rattle.



● End shaft width is 320mm, TDX-06 can be use for four wheeled vehicles **※2**. (Usable in only the case the sponge with 35mm OD and 320mm end shaft width can squeeze through the wheel. Shaft may not squeeze through especially small-diameter wheel due to interference.) 3m long size ultra robot arm lock can lock two vehicles. One-touch lock, only inseting shaft to the key cylinder, makes everyday use smoothly.



LOCK TWO VEHICLES SIMULTANEOUSLY !



HAYABUSA1300 (EJ11A) REBEL1100 (5C87)



ZEPHYR400 (ZR400C) ZEPHYR1100RS (ZRT10A)

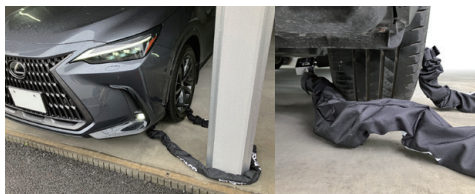


PANIGALE V4S PANIGALE V2S

CAN LOCK FOUR-WHEELED !

INSTALLATION EXAMPLE

LEXUS NX 20 **※2**



The shaft (φ 22 (φ 35 including protective sponge)/320mm) is squeezed through the wheel **※2** to lock your car.

The lock is 3m long, so it can be locked with pillars and anchors at your home.

LAND CRUISER250 **※2**



LAND CRUISER150 LATE **※2**



※ When ultra robot arm lock installation, lay down a tarp and so on before working.

※2, When use for four wheeled lock, arm lock may not be usable depending on the spoke design of the four wheels, the vehicle's grade, structure (small diameter wheels), etc.

NOTED! IN THE CASE, INSTALLATION IS NOT POSSIBLE ! X

CASE OF HILUX

Not available if TDX-06 shaft (including the φ 35 protective sponge) cannot pass between the wheel and the disc brake dust cover, as Hilux on the right.

